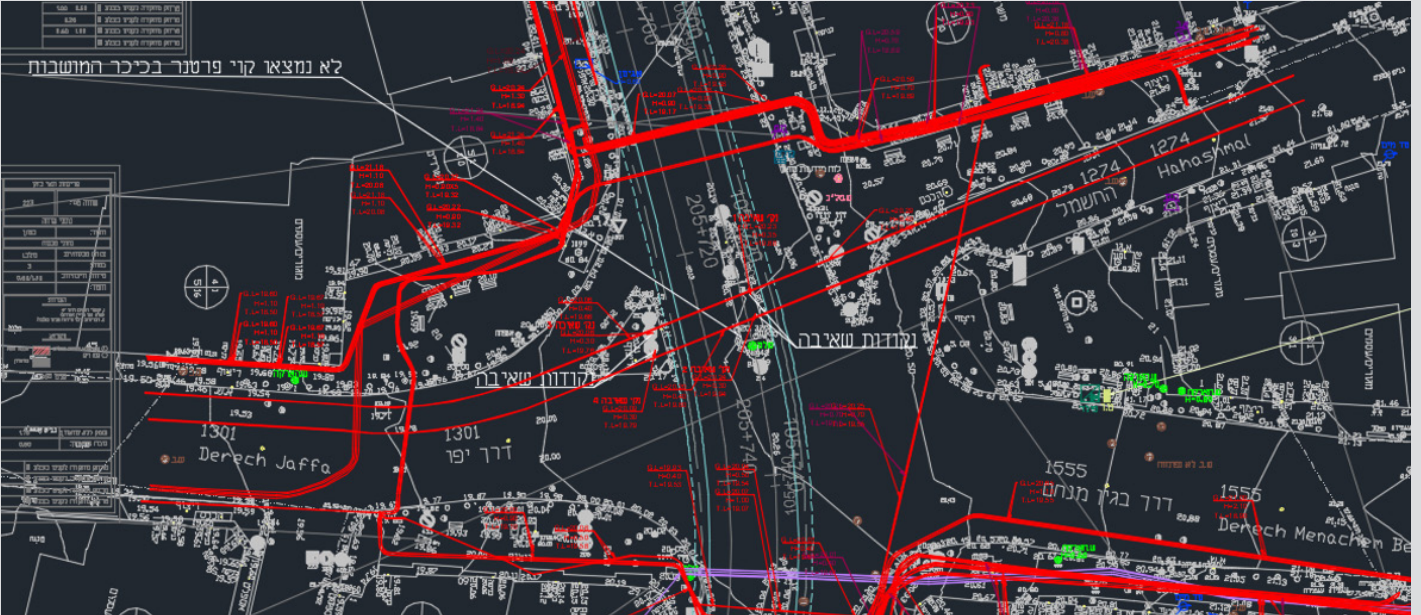


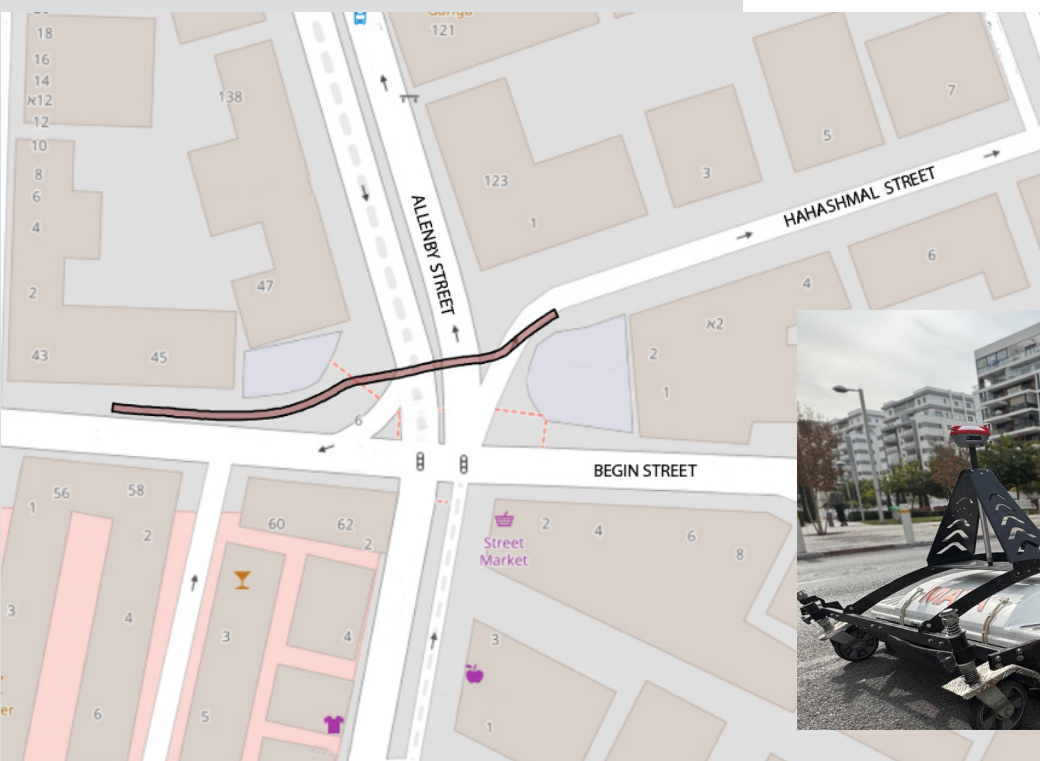
Transforming Urban Infrastructure Detection – in Tel Aviv



In the core of Tel Aviv's Allenby Street, we were tasked with a unique challenge: locating concrete slabs shielding a high-voltage power duct—without disturbing the city's daily rhythm.

In such a dense urban environment, traditional methods would have meant road closures, heavy excavation, lengthy permit processes, and significant disruption to businesses and traffic. Just securing the necessary approvals could have taken two months.

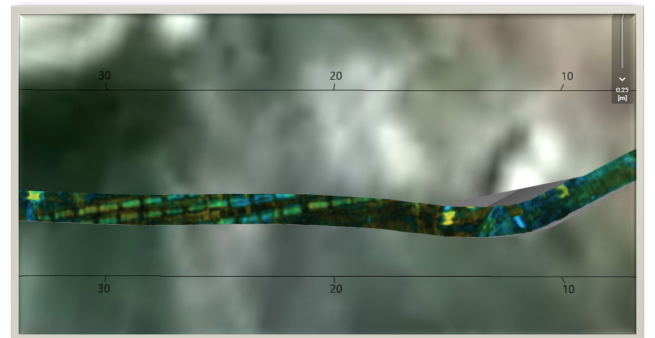
Instead, we turned to cutting-edge Ground-Penetrating Radar (GPR) technology. In just one hour—during regular daytime activity—we mapped the exact location of the slabs with precision, zero excavation, and absolutely no interference to vehicles or pedestrians.



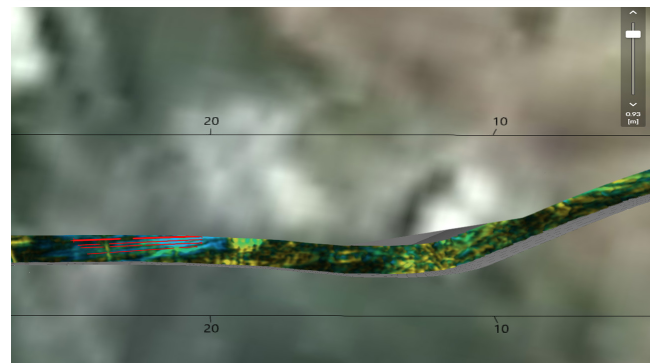
Scan image from the interpretation software



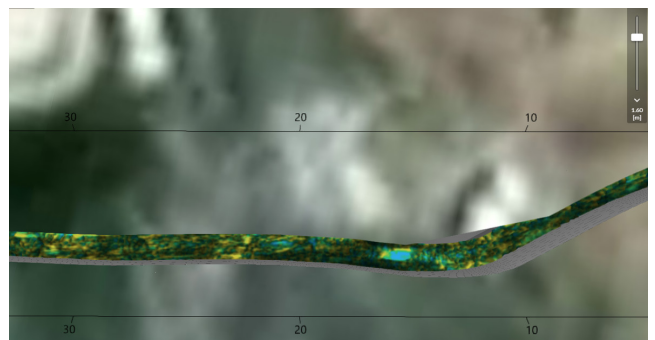
Identification of the concrete slabs already at a depth of 0.25 meters



Identification of the power cable trench at a depth of approximately 0.90 meters



End of the power cable trench at a depth of 1.60 meters, from which it can be concluded that the trench has a width of 0.60 meters



The results speak for themselves:

From months to minutes – dramatically reduced project timelines

No bureaucracy, no mess – avoided costly and complex permit procedures

City life uninterrupted – kept traffic flowing and businesses running smoothly

This project is proof that with the right technology, even the toughest urban infrastructure challenges can be solved efficiently, cleanly, and without missing a beat.